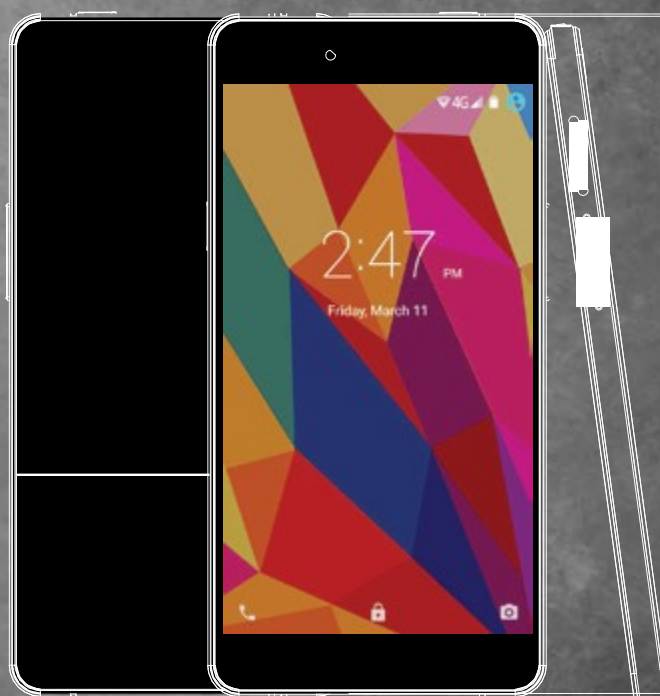


beléci Limited Edition Product Overview

ProAm



INTRODUCTION

REDEFINING LUXURY

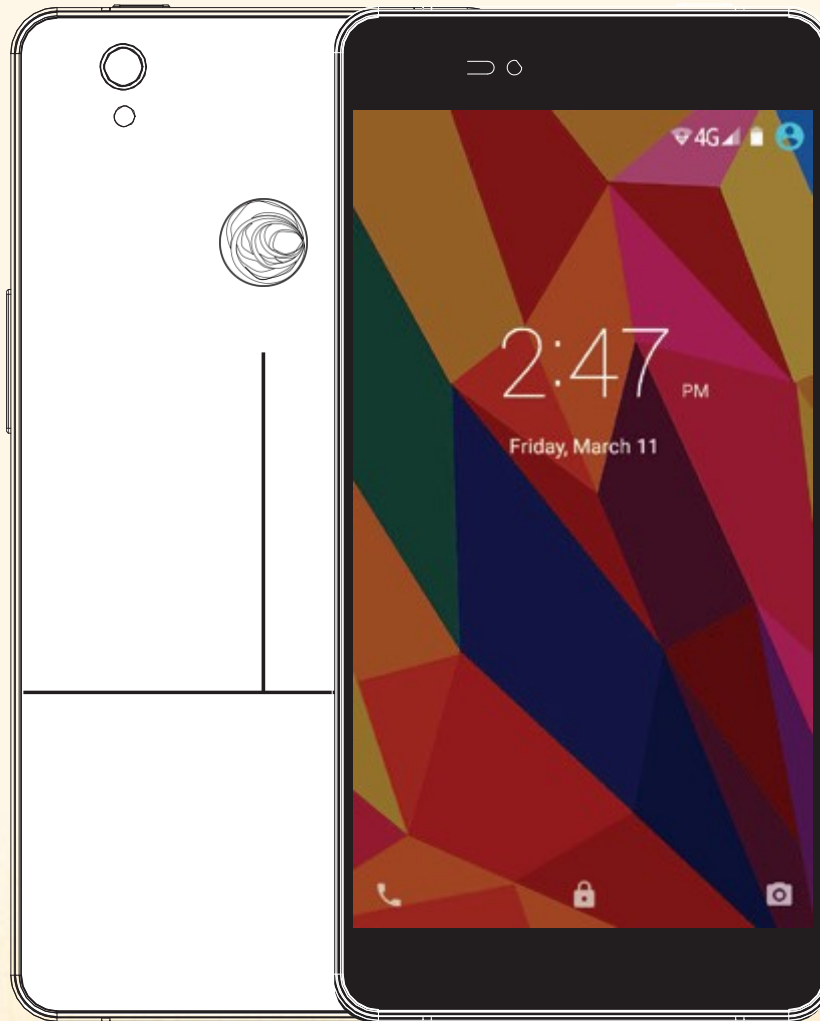
beléci™ is built with impeccable craftsmanship and is designed to meet the 21st century mobile security challenges with its built-in CodeTel security platform.

Every feature and detail is aesthetically pleasing and meets the needs of the user's daily life.

beléci features a rounded edge, 5.0 inch display touch screen with breathtaking resolution. Built with a powerful 13MP camera that allows users to take the most beautiful pictures, beléci provides the perfect balance of style and security without compromise.

beléci's 1.3GHz Quad- Core ARM® Cortex™-A53 CPU delivers amazing gaming experience, great performance for speedy application, web page loading, fast multitasking, and smooth video playback.

TECHNICAL SPECIFICATIONS



DESIGN

Double-sided strength glass
with metal frame

DISPLAY

5" IPS (1280X720)

DIMENSION

142.6x70.7x7.1mm

PLATFORM

MTK6753 1.3GHZ Quad core

STORAGE

RAM: 2G/ROM: 32G
(MicroSD) Up to 32G

CAMERA

13M Rear / 8M Front

BATTERY

2150mA

VIDEO

1080P FULL HD

ANDROID: v5.1

NETWORKS

2G (QUAD BAND),
3G (BAND 2/5),
4G LTE (FDD BAND
2/4/5/17)

DUAL SIM

SPEED

EDGE/HSPA+/CAT4

WIFI

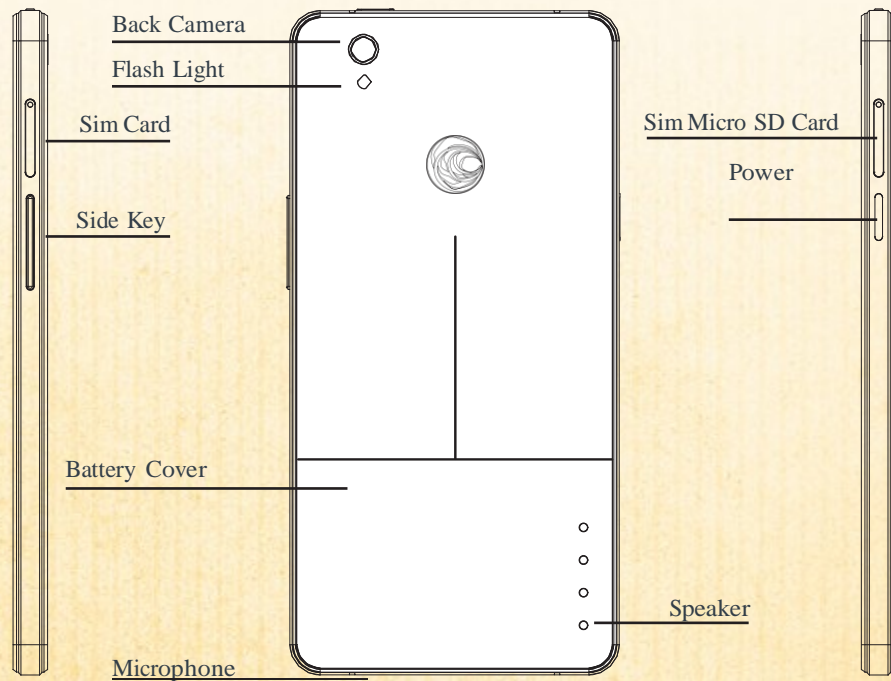
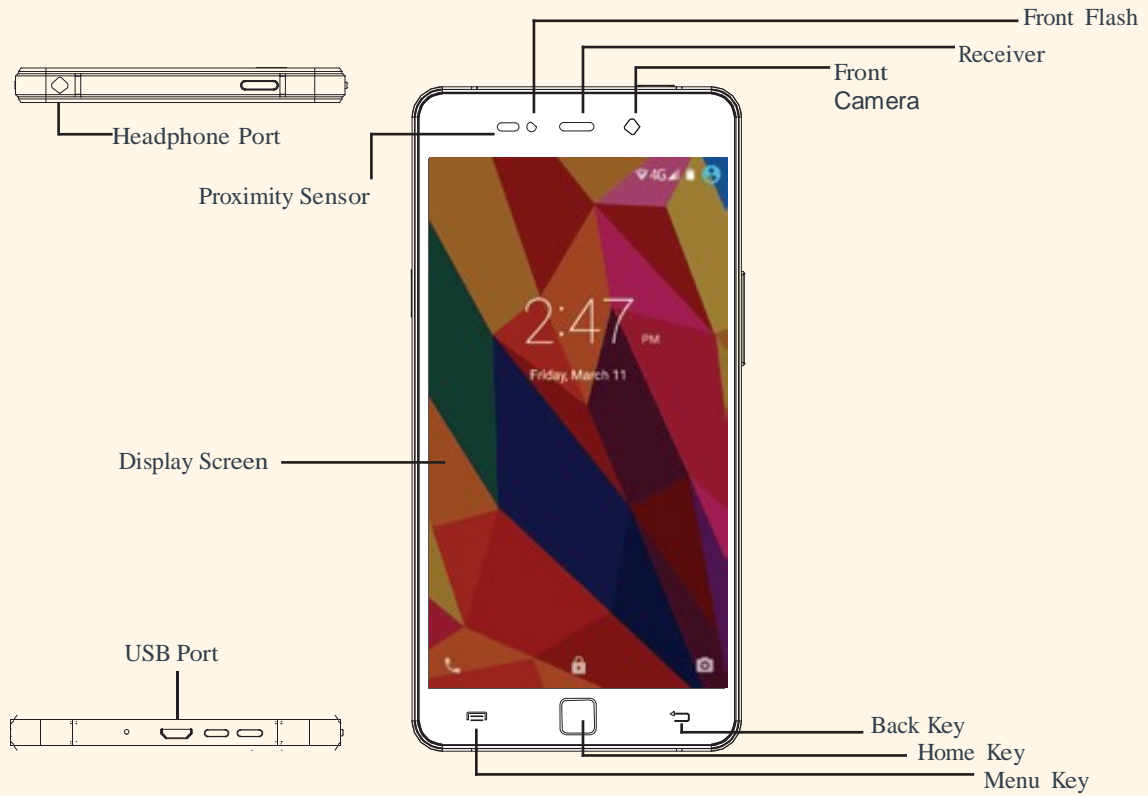
802.11 B/G/N

CODETEL SOFTWARE

SYSTEM APPS

Coin SL

KNOW YOUR DEVICE



HOW TO USE YOUR DEVICE

Charging the Battery

Before using your phone for the first time, charge the phone for four hours.

To charge the battery:

- Attach one end of the USB cord to the phone's micro-USB port and the other end to the plug.
- Plug the phone into the socket.

For the best battery life, let your battery drain down to at least 20% before recharging, and do not leave your phone plugged in after it is fully charged.

Insert SIM & Micro SD Card

Please follow as shown on the label on the phone. Make sure that the clipped corner of the SIM card is facing the correct direction and the metallic contacts are facing the correct direction. Slide the SIM card into the card slot until it stops.

Powering On & Off



- Hold down the power button to turn the phone on.
- Hold down the power button then touch Power OFF to turn the phone off

Dim, Lock & Wake the Phone

1. When the power is on and you want to dim the screen, press the power button
2. When the screen is dimmed and you want to wake the phone, press the unlock button and slide up to unlock.

Set a Ringtone



- Select the settings icon
- Select settings→ Sound & notification → Select the icon next to general→ Phone ringtone.
- Touch a ringtone to hear it, and then touch OK to select it.

Make & Answer a Call



- Go to your phone icon.
- Dial a number using the dial pad.
- Touch phone icon to make a call.

Send a Text



- Select the messaging icon
- Touch the "To" field, and then enter a recipient's name.
- Touch "type text message", and begin entering your message.
- Touch (send icon) to send the message.

Connect to WI-FI



- Press→ Settings→ Wi-Fi
- To turn on Wi-Fi.
- Touch a network to connect to it.

Take a Picture

- Select the Camera icon to open camera interface
- Within the Camera app, tap the screen to focus on specific area
- Select the Camera icon located on the bottom of the screen to take a picture

Share a Photo

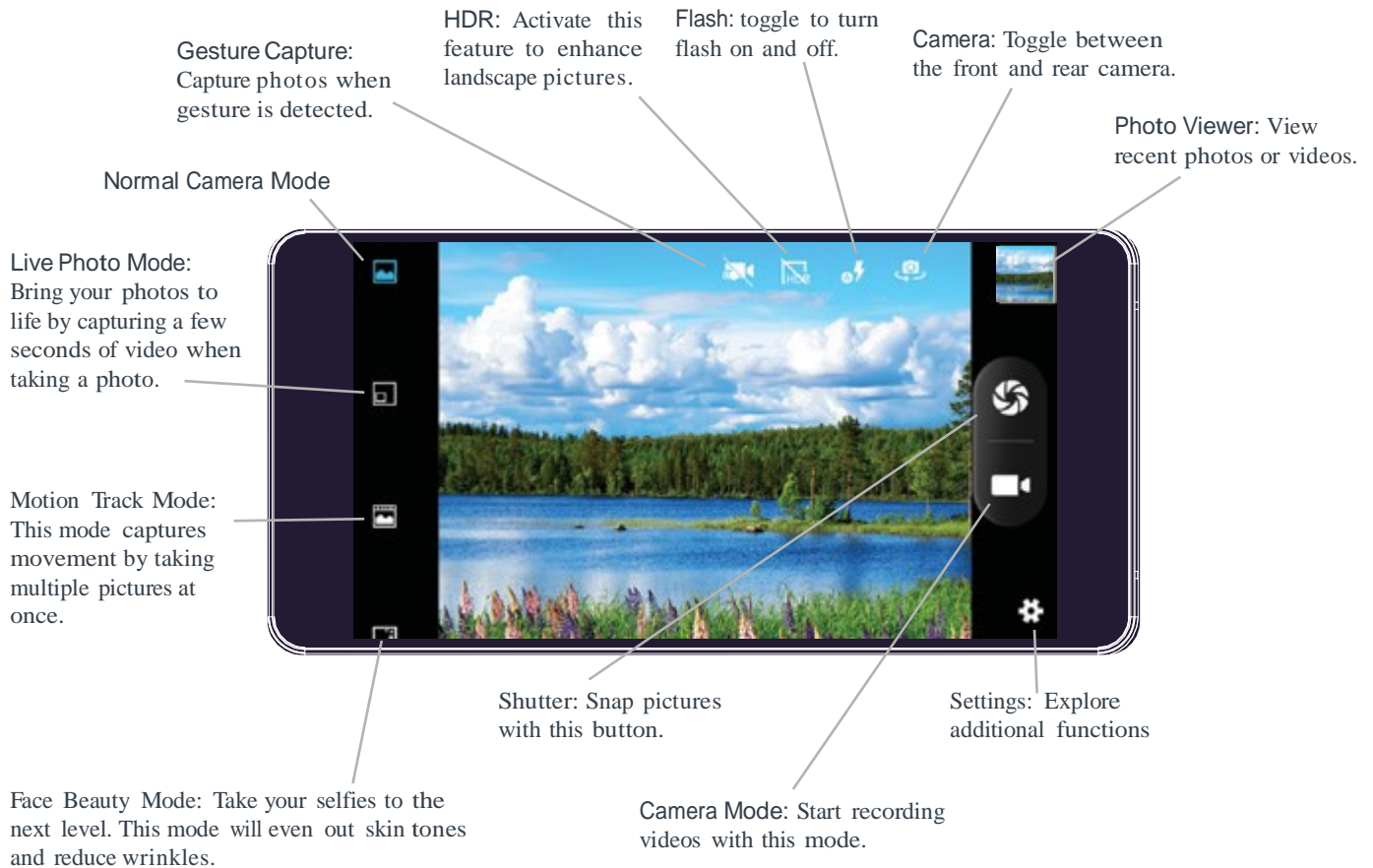
- Select Gallery icon
- Select an album to open it then select the picture you want to share
- Select an application for sending the photo.

Shoot a Video

1. Select the Camera icon to enter camera interface
2. Within the Camera app, select Video.
3. Select the camera button to begin filming, and press again to stop filming.

CAMERA

beléci's camera introduces a number of new features, including the unique and powerful Time Shift setting, fantastic features for getting the right pictures.



beléci's CAMERA

beléci features two cameras that capture HD pictures and videos. The rear-facing camera features a 13MP camera, autofocus and bright LED flash. The front-facing 5MP camera can capture HD videos and pictures.

- For quick access, the camera is always accessible from the Home screen and standby screen.

beléci's camera introduces a number of new features, including the unique and powerful Time Shift setting, a fantastic feature for getting the right pictures as seen below.



INTERFACE ESSENTIALS

beléci presents a new standard that is entirely movement centered. The new interface includes many features that make navigation fast and convenient, and sets beléci apart from other smartphones on the market.



STAND BY MODE

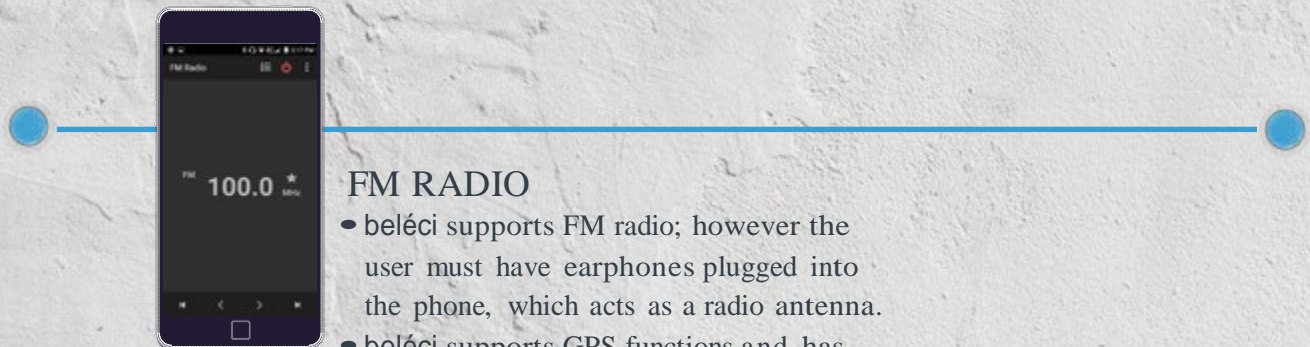
Home screen shows the users notifications, message, date and time. The phone and camera is also accessible in standby mode. To access the camera and phone simply select and slide the phone icon to the right to make phone calls. Select and slide the camera icon to the left until the camera launches.

NOTIFICATION PANEL

The Notification panel is your center for new events for example new e-mails, voicemails, updates, alerts and more. Drag the top of the screen down to view notifications. In addition, tap the top of the notification bar to access the setting menu.

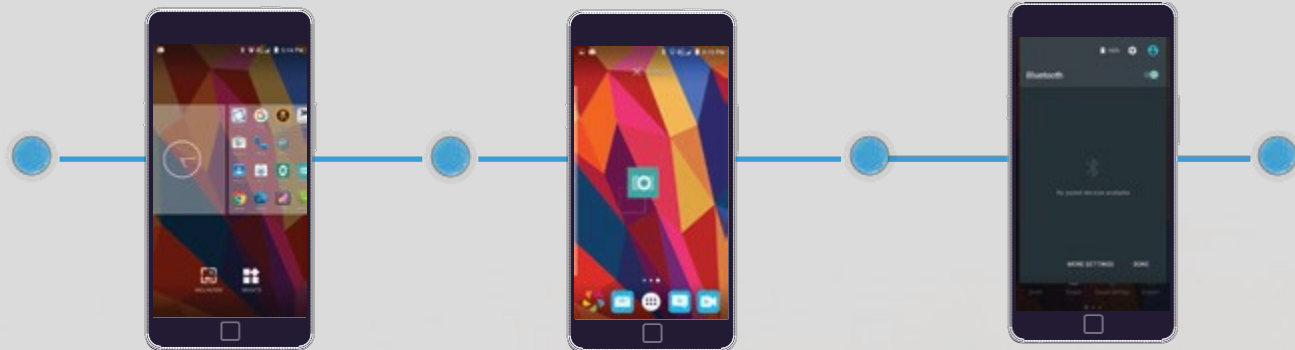
CUSTOMIZE FOOTER

Customize the footer bar with up to four applications, which will always be accessible from any screen. The user can switch to any screen by tapping or gliding the phones screen to the left or right.



FM RADIO

- beléci supports FM radio; however the user must have earphones plugged into the phone, which acts as a radio antenna.
- beléci supports GPS functions and has Google maps app preinstalled



HOME SCREEN SHORT CUTS & WIDGETS

Customize your beléci to fit your daily needs. Put what you care about most right up front, including people, photos, playlists, videos, websites, and map locations.

- To move an icon on the Home screen, the user must first select & hold the icon. The icon will enlarge when it's ready to be moved. Without lifting your finger, drag the object to the desired position.
- To move the icon to another page drag the icon to the edge of the screen and hold it there until the phone switches screens.
- To access the wallpaper, widgets and setting icon touch and hold the screen for 2 seconds.
- The user can navigate between widget screens by gliding the phones screen to the left or right.
- To select a widget, the user must touch & hold the widget. The widget will enlarge when it's ready to be moved on to the home screen.

EDIT & SHARING

- To rearrange the icons on the phone tap, hold and drag an icon anywhere on the screen or to another panel. To remove an icon the user must tap, hold, and drag the icon over the remove sign at the top center of the screen.
- To create a folder, simply drag one icon on top of another icon and lift your finger. A folder will show mini icons from the first four apps in the folder.
- To access the icon within a folder, tap on the folder and select the icon.
- To remove an icon from the folder, tap on the folder select, hold and drag the icon from the folder.
- To highlight a word or sentence, tap and hold on that word to invoke the highlight bar and Copy/Paste menu. The user can also expand the highlighted section by dragging on either of the two anchor points.
- To paste, the copied text place your finger at the point where you want to insert and hold it there until the past menu appears.
- Another key feature of beléci is the ability to quickly and easily share content using emails and messages.

BLUETOOTH®

beléci supports Bluetooth® functions and can establish a wireless connection between the phones with other compatible devices. Users can use Bluetooth to share pictures, videos and music files. Using beléci Bluetooth technology enables the user to achieve optimal performance up to 30 feet.

SETTING UP BLUETOOTH ON YOUR beléci

1. Enter the setting menu, Touch the Bluetooth tab to open the function, idle screen will display BT icon in the status bar.
2. BT is visible to nearby devices while Bluetooth settings are open and other devices can search the phone.
3. Before using the phone as a Bluetooth device, you need to pair the phone with the target device as follows:
 - Make sure your phone has Bluetooth-enabled. Touch the icon menu and select "Refresh"
 - Identify and select the device you want to pair with and enter in the password to complete the process

DEVICE SETTINGS

WIRELESS & NETWORKS:

Wi-Fi (On/Off)
Bluetooth (On/Off)
SIM cards
Data usage
(Overview/Wi-Fi) More (Airplane Mode,
Default SMS app; Tethering & Portable
Hotspot, VPN)

DEVICE:

Display
(MiraVision, Wallpaper, Brightness Level,
Adaptive brightness, Sleep, Daydream,
Font size, when device is rotated)
Sound & Notification
(General, Silent, Meeting, Outdoor;
Notification, Interruptions, Sound
Enhancement)
Storage
(Total Space, SD Card,
External USB Storage)
Battery
Apps
(Downloaded, Running, All)

PERSONAL:

Location
(Mode: High Accuracy, Battery
Saving, Device Only)
Security
(Screen Lock, Automatically Lock,
Power button instantly locks,
Owner info, Smart Lock);
Encryption
(Encrypt phone); SIM card lock (Setup SIM
card lock); Passwords (Make passwords
visible); Device Administration, Unknown

Sources, Auto-smart Management, App
Permissions, Data Protection, Mobile Anti-
Theft; Credential Storage (Storage Type,
Trusted Credentials, Install from Phone
Storage; Advanced (Trust agents, Screen
Pinning, Apps with usage access)
Accounts

Language & Input

(Language, Spell Checker,
Personal Dictionary); Keyboard & Input
Methods (Current Keyboard, Android
Keyboard (AOSP), Google Voice Typing;
Speech (Voice Input, Text-to-speech
output); Mouse/trackpad (Pointer speed)

Backup & reset

SYSTEM:

Date & Time
Scheduled power on & off
Accessibility
(Services (Talkback, Switch Access);
System (Captions, Magnification gestures,
Three pointer take screen shot, Smart
wake, Large text, High contrast text,
Power button ends call, Auto-rotate
screen, Speak passwords, Accessibility
shortcut, Text-to-speech output, Touch
& hold delay, Quick boot); Display (Color
inversion, Color correction)
Printing (Cloud Print)

About phone

(System Updates, Status, Legal
Information, Model Number, Android
Version, Baseband version, Kernel version,
Build number, Custom build version)